



## Research article

## The effect of hydroalcoholic chicorium extract on the QT interval of the heart and its histopathology in biliary cirrhosis induced by bile duct ligation in Rats

Mahin Dianat, Mohammad Badavi, Reihaneh Jelodar\*

Jundishapur University of Medical Sciences, Ahwaz, Iran

**Corresponding author:** Reihaneh Jelodar, ✉ [Reihane.jelodar@gmail.com](mailto:Reihane.jelodar@gmail.com)

Jundishapur University of Medical Sciences, Ahwaz, Iran

© The author(s). This is an open access article distributed under the terms of the Creative Commons Attribution License (<https://creativecommons.org/licenses/by-nc/4.0/>). See <https://jmpas.com/reprints-and-permissions> for full terms and conditions.

**Received** – 20 October 2016, **Revised** - 25 November 2016, **Accepted** – 23 December 2017 (DD-MM-YYYY)

**Refer This Article**

Mahin Dianat, Mohammad Badavi, Reihaneh Jelodar, 2017. The effect of hydroalcoholic chicorium extract on the QT interval of the heart and its histopathology in biliary cirrhosis induced by bile duct ligation in Rats. Journal of medical pharmaceutical and allied sciences, V 6 - I 6, Pages -590 – 593. Doi: <https://doi.org/10.55522/jmpas.V6I6.0155>.

### ABSTRACT

QT prolongation is a problem that increases the ventricular arrhythmias in the cirrhotic patients. Chicorium extract has been reported to have potential anti-inflammatory and antioxidant activity. This study aimed to find the effect of chicorium extract on QT interval of heart and its histopathological parameters in rats with biliary cirrhosis induced by bile duct ligation (BDL).

Thirty two male Sprague Dawley rats (200 - 250 g) were divided into 4 groups; negative control, cirrhotic, and 2 cirrhotic groups treated with chicorium extract in doses of 50 mg/kg and 100 mg/kg orally for 4 weeks. In all groups before BDL and 4 weeks after surgery animals were anesthetized and their electrocardiograms were recorded. After the required period of BDL, liver was isolated and immersed in 10% formalin solution and stained by hematoxylin and eosin for histological studies. Student t-test and one-way ANOVA.  $P < 0.05$  was considered as significant level. The QT interval was calculated using the Bazett's formula and corrected QT (QTc) was obtained. Histopathological parameters were reduced in cirrhotic groups treated with extract compared to control cirrhotic group. These results revealed that cirrhosis produce prolonged QT interval and chicorium extract has an ameliorating effect on QT prolongation probably via its antiarrhythmic property.

**Keywords:** Chicory, Cirrhosis, QT Interval, Histopathology, rPeclinical study.

### INTRODUCTION

Liver plays an important and vital role in the body as it participates in the metabolism of carbohydrates, fats, storage of vitamin A, detoxification of toxic substances, production of clotting factors, and so on. Liver cirrhosis is a frequent consequence of the long clinical course of chronic liver diseases. It is characterized by tissue fibrosis and conversion of normal liver architecture into abnormal nodules. Portal hypertension is the most important and earliest symptoms of cirrhosis and underlies most of the clinical complications of the disease. Liver cirrhosis is associated with some hemodynamic changes and is an outcome of chronic liver diseases leading to cardiovascular abnormalities. Kowalski et al. reported for the first time that cirrhotic patients had abnormal cardiovascular function and prolonged QT interval. The systemic circulation in cirrhotic subjects is hyper dynamic and characterized by increased heart rate (HR), cardiac

output, and decreased systemic vascular resistance or arterial blood pressure.

QT interval duration can be determined by ECG re-cording from the onset of the QRS complex to the end of the T wave. The QT represents the duration of the ventricular electric systole and its prolongation predisposes ventricular arrhythmias. QT interval varies with heart rate, so that it shortens when heart rate increases. The most frequently used formula to correct QT for heart rate (QTc) has been proposed by Bazett.

Equation 1. Bazett's Formula

$$QTc \text{ (QT corrected for HR)} = QT / \text{square root RR interval}$$

Liver diseases are critical health problems, and curative plants and herbs have been used for healing them all over the world.

Due to their safety and efficacy, herbal medicines are utilized increasingly to treat an extensive variety of diseases.

Chicorium has polyphenols and flavonoids which may have a wide range of biological activities, such as anti-inflammatory, antitumor, antiulcer, antibacterial, antithrombotic effects, antioxidant effects.

### Objectives

This study aimed to find out the effect of hydroalcoholic chicorium extract on electrophysiology of heart, serum bilirubin, and pathological parameters on a model of induced cholestasis in rats.

## MATERIALS AND METHOD

### Plant Material

Solid fraction of chicorium seed was obtained from the Pharmacology Department of the School of Pharmacy of Debrecen Medical University. The solid chicory fraction was soaked in 70% ethanol for 3 days with occasional shaking. The extract was filtered through a clean cotton cloth then solvent was evaporated under vacuum using a rotary evaporator at 40°C.

### Chemicals

Ketamine and xylazine were purchased from Alfasan Co (Holland). Hematoxylin and eosin were purchased from Sigma (St. Louis, MO, USA).

### Animals

Male Sprague Dawley rats (200 - 250 g) were obtained from the Animal House of Ahvaz Jundishapur University of Medical Sciences, Ahvaz, Iran. Animals were kept under standard laboratory care (temperature 25 2°C, 12:12 hour light: dark cycle) with access to food and water ad libitum. The protocol implementation was approved by Research Committee of Ahvaz Jundishapur University of Medical Sciences, Ahvaz, Iran. The animals were randomly divided into 4 groups (negative control [sham], positive control [cirrhotic], and 2 cirrhotic groups treated with 2 doses of extract) and each group consisted of 8 rats.

Extra hepatic cholestasis (biliary cirrhosis) was induced by long-term (4 weeks) double bile duct ligation (BDL) in animals. Each rat was weighed and anesthetized by intraperitoneal administration of ketamine (50 mg/kg) and xylazine hydrochloride (10 mg/kg). Following a midline abdominal incision closed to the sternum, the common bile duct was exposed; a double ligature was made with 3-0 silk suture, after that, a cut was made between both ligatures. Abdominal muscles and abdominal skin were closed with 3-0 silk suture. The negative control group, after anesthetization, shaved, and the common bile duct was only dissected from the surrounding tissue without blocking the bile duct and was treated with normal saline (extract solvent) 1 mL/kg daily for 4 weeks. The positive control group (by performing BDL, cirrhotic group) was treated with normal saline (extract solvent) 1 mL/kg daily for 4 weeks.

The treated group was divided into subgroups (A and B); one of them received 50 mg/kg and the other one 100 mg/kg of the extract for 4 weeks after bile duct ligation.

Then, the animals were allowed to recover in separate cage with free access to food and water.

### QT interval assay

Four weeks (28 days) after the beginning of the experiment or BDL, all animals were anesthetized and lead II electrocardiogram (in order to assess QT interval) were recorded. Power lab and BioAmp (AD-Instruments Co., Australia) were used for recorded ECG.

### Bilirubin analysis

Blood samples were withdrawn from the animals' hearts to measure serum bilirubin as a marker of cholestasis. Total and conjugated bilirubin were measured by colorimetric method using an auto-analyzer (BT3000).

Sample Staining with Hematoxylin and Eosin After the required period of BDL, animals were anaesthetized, liver was isolated and washed with normal saline and immersed in 10% formalin solution for histological studies. Samples were embedded in paraffin. The sections were made in 5 µm thickness with a micro-tome and stained by hematoxylin and eosin. Then, the slides were examined under a microscope (Olympus BH2-RFCA).

### Statistics

Data were presented as Mean SEM. Results were analyzed by using Student t-test and one-way ANOVA.  $P < 0.05$  was considered as significant level.

## RESULTS

Before BDL, comparison of QTc in different groups did not show a significant difference. Four weeks after BDL, QTc in cirrhotic group significantly increased compared to negative control group ( $P < 0.001$ ). Also significant differences between two groups with doses of extract-treated 50 mg/kg ( $P < 0.001$ ) and 100 mg/kg ( $P < 0.05$ ) and negative control group were observed (Figure 1).

Significantly decreased in QTc in the 50 mg/kg ( $P < 0.01$ ) and 100mg/kg ( $P < 0.001$ ) extract-treated groups was shown in comparison with cirrhotic group. Heart rate did not show a significant difference among all groups before and after BDL (Table 1).

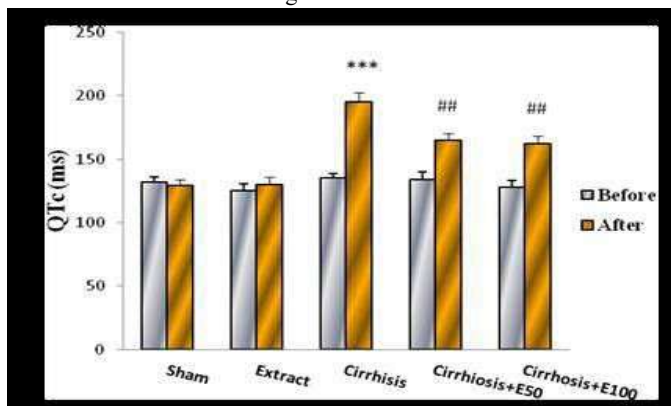
The conjugated and total bilirubin levels in positive control group and 2 groups of extract treated were significantly higher than those levels in negative control group ( $P < 0.001$ ). Significant difference between the conjugated bilirubin levels in cirrhotic treated rats with extract (50 and 100 mg/kg/day) groups was observed compared to cirrhotic group ( $P < 0.01$ ). There was also significant difference between the total bilirubin level in cirrhotic treated with extract (50 and 100 mg/kg/day) groups and cirrhotic group ( $P < 0.05$ ) (Table 2). Results of histopathological samples of liver, stained with hematoxylin, and eosin are shown in Figures 2 - 4 at 40X magnification.

The samples from negative control group that received normal saline did not show histopathological changes and normal hepatic parenchyma and hepatocytes were observed (Figure 2 A and B) [1,2].

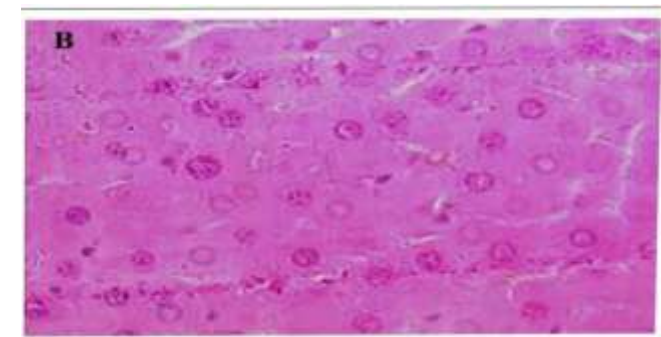
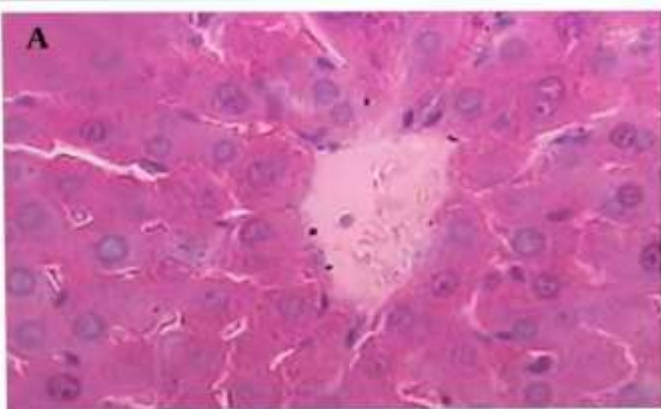
The liver morphological changes induced by BDL are shown in Figure 3. Severe histopathological changes were observed in livers of all rats from positive control groups (cirrhotic group). The predominant lesions were extensive degeneration and necrotic cells. The histological appearance of the liver showed cytoplasmic vacuolation that indicated fatty change (Figure 3 A and B).

Treatment by extract (50 and 100 mg/kg/day) ameliorated the changes induced by BDL. The lesions in the liver of cirrhotic rats that received extract (50 and 100 mg/kg/ day) were considerably less than those in the cirrhotic rats (Figure 4 A- D).

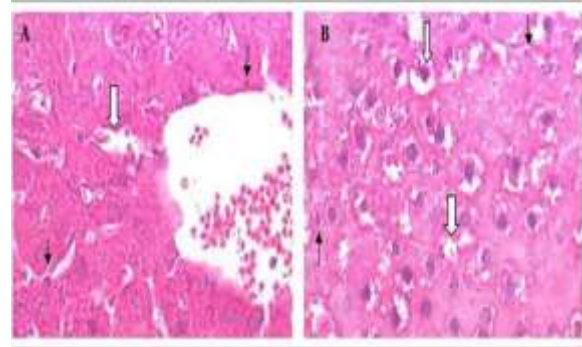
**Figure 1:** Comparison of QTc (in ms) Among Different Groups According to Bazett's Formula



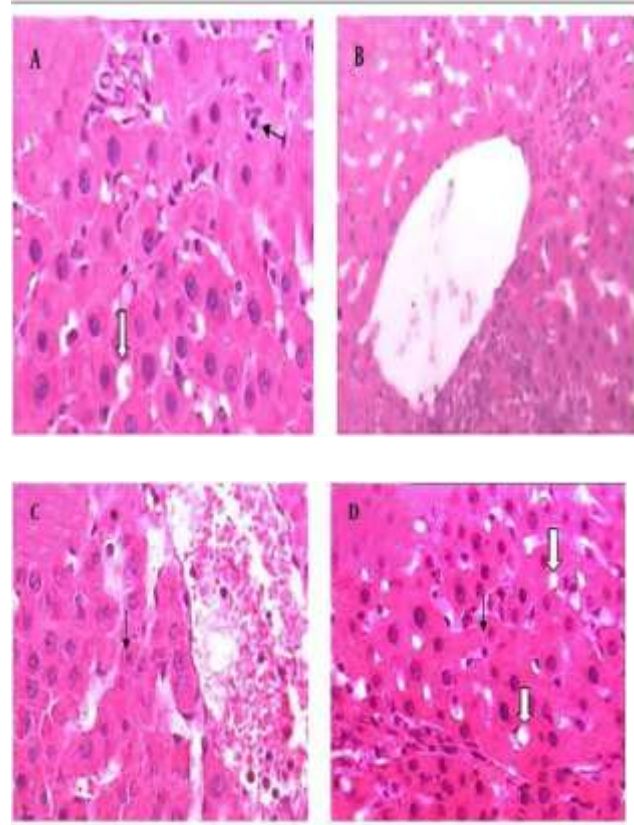
A and B show normal hepatic parenchyma and hepatocytes and intact basic liver structures.



**Figure 3:** Hematoxylin and Eosin Histopathological Stained of the Liver Tissue (x 400) in Cirrhotic Group



**Figure 4:** Hematoxylin and Eosin Histopathological Stained of the Liver Tissue (x 400)



## DISCUSSION

In this study, the effect of hydroalcoholic chicorium extract was studied on QT interval, serum bilirubin, and histopathological parameters of a model of induced cholestasis in rats. Chicorium extract has shown a reduction in QT interval, bilirubin levels, and histopathological changes when administered for 4 weeks to rats suffering from controlled hepatic complications caused by cirrhosis [4-8].

A well-known model to create cirrhosis in animals is BDL. It induces cirrhosis in animals which is reflected by a significant increase in serum total bilirubin levels. In the present study, serum bilirubin level has changed by Chicorium extract treatment. Previous studies had shown that the liver damage markers were elevated by BDL induced cirrhosis. Chronic BDL significantly increases most of

plasma and hepatic cytokine levels. Several studies have shown that treatment with free radical scavengers remarkably decreases liver damage following BDL in rats. Other results have demonstrated that oxidative stress associated with lipid peroxidation is parenchyma necrosis (dark arrow) and cytoplasmic vacuolation (white arrow) involved in the development of liver damage in cholestasis rats by BDL. This study has shown that histopathological parameters were reduced in cirrhotic groups treated with two doses of extract compared to positive control group.

To understand the potential effect of any unknown compound or substance on body, it is essential to know the mechanism of action of the compound.

Prolongation of QT interval mechanism in the cirrhotic rat is poorly known, therefore the effect of chicorium extract was studied on electrophysiology of heart in rats with biliary cirrhosis induced by BDL. In our previous research, we reported that chicory has potential anti-oxidant, anti-inflammatory, and free radical scavenger effects, thus we tried to find out to what extent this compound can influence QT interval by a well-known method. The prolongation of QT interval is one of the important symptoms of cardiac abnormality in cirrhotic patients with ventricular arrhythmia risk.

Chicorium extract as a source of antioxidant at different doses were administered to cirrhotic rats. Significant decrease in QT interval, laboratory, and histopathological parameters in BDL group treated by Chicorium extract suggest the protective effect of this extract in cirrhotic patients [8-12].

## CONCLUSION

In the near future the role of lasers in the dental treatment will rise tremendously and to meet this foreseen requirement it is really necessary for upcoming dentist to have detail knowledge of the physics and interactions involved in laser. Cobb CM mentioned the usage of lasers have become a highly dependable and desirable tool replacing the traditional scalpel based surgeries for periodontal needs. This is an excellent mode that can be used for various application ranging from soft tissue to hard tissue. Weesner BW says that there has been explosion in research, articles and case reports about laser therapy in recent years. The future is promising and the literature is exciting but

sometimes conflict in finding. Laser may seem to be have a much greater role in the future than is now realize.

## REFERENCES

1. Kuntz E, Kuntz HD, 2006. Hepatology, Principles and practice: history, morphology. Biochemistry, diagnostics, clinic, therapy. Berlin, Heidelberg: Springer Science & Business Media. Pages 31-71.
2. Pinzani M, Rosselli M, Zuckermann M, 2011. Liver cirrhosis. Best Pract Res Clin Gastroenterol. 25(2), Pages 281-90. Doi: 10.1016/j.bpg.02.009.
3. Pudil R, Pelouch R, Praus R, 2013. Heart failure in patients with liver cirrhosis. Cor Vasa. 55(4), Pages e391-6. Doi: 10.1016/j.crvasa.06.002.
4. Lee SS, 1989. Cardiac abnormalities in liver cirrhosis. West J Med. 151(5), Pages 530-5.
5. Lee RF, Glenn TK, Lee SS, 2007. Cardiac dysfunction in cirrhosis. 21(1), Pages 125-40. Doi: 10.1016/j.bpg.06.003.
6. Kowalski HJ, Abelmann WH, 2009. The cardiac output at rest in Laennec's cirrhosis. J Clin Invest. 32(10), Pages 1025-33. Doi: 10.1172/JCI!02813.
7. Llach J, Gines P, Arroyo V, 1988. Prognostic value of arterial pressure, endogenous vasoactive systems, and renal function in cirrhotic patients admitted to the hospital for the treatment of ascites. Gastroenterology. 94(2), Pages 482-7.
8. Moller S, Wiinberg N, Henriksen JH, 1995. Noninvasive 24-hour ambulatory arterial blood pressure monitoring in cirrhosis. Hepatology. 22(1), Pages 88-95.
9. Zambruni A, Trevisani F, Caraceni P, 2006. Cardiac electrophysiological abnormalities in patients with cirrhosis. Hepatol. 44 (5), Pages 994-1002.
10. Torregrosa M, Aguade S, Dos L, 2005. Cardiac alterations in cirrhosis: reversibility after liver transplantation. J Hepatol. 42(1), Pages 68-74.
11. Dhiman RK, Chawla YK, 2005. Herbal medicines for liver diseases. Dig Dis Sci. 50(10), Pages 1807-12. Doi: 10.1007/s10620-005-2942-9.
12. Stickel F, Schuppan D, 2006. Herbal medicine in the treatment of liver diseases. Dig Liver Dis. 39(4), Pages 293-304. Doi: 10.1016/j.dld.2006.11.004.